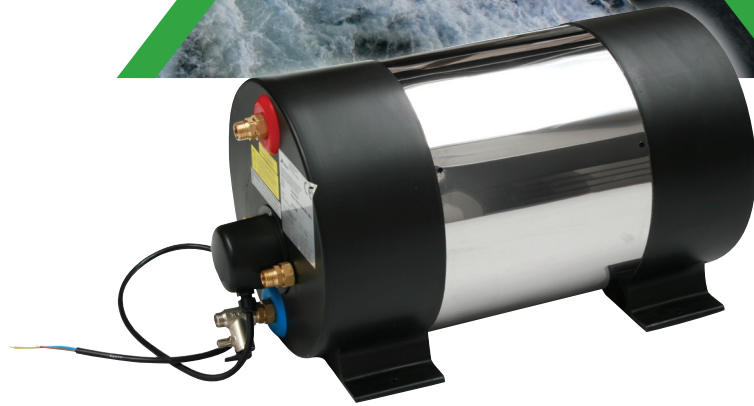




JOHNSON PUMP
AN SPX BRAND



AquaH

Marine Water Heaters

Stainless steel water heaters with dual heating as standard - electrical heating and indirect heating based on an second heat source, for example based on the cooling system from the Marine engine or generator set.

AquaH is a new innovative series of AISI 316 stainless steel water heaters, with a storage capacity of 22 up to 80 litres (from 5.3 to 19.3 gal.). The heaters are cased in AISI 304 stainless steel and is provided with a sturdy compact plastic end cover which also includes the mounting brackets.

The AquaH series is designed to withstand the marine environment. It is compact, easy to install and has a modern, attractive look.

Electrical heating elements are available in Incoloy at 500 & 1200 Watts allowing hot water production when engine heat is not available but when 120 or 230 V AC is. Delivered with an adjustable safety thermostat for temperature adjustment while on electrical heating.

- External casing made of AISI 304 stainless steel
- Standard with compact plastic integrated mounting brackets
- Internal surface made of AISI 316L stainless steel
- Heat insulation polyurethane foam
- Safety & non return valve set at 6 Bar +/- 0,5 Bar
- Engine ware fittings 1/2 BSP or NPT



Accessories

Order no	Description
56-47464-01	AquaH Thermostat Water Mixer Kit BSP
56-47464-02	AquaH Thermostat Water Mixer Kit NPT

AquaH - Marine Water Heaters complies with the requirements of the following European Directives:

Low Voltage (LVD) Directive 2006/95/EC

- EN 60335-1 (2008): Household and Similar Electrical Appliances – Safety -Part 1: General requirements
- EN 60335-2-21 (02-2004) + A1 (07-2005) + EC (01-2008): Household and Similar Electrical Appliances – Safety - Part 2: Particular requirements for storage of water heaters

Electromagnetic Compatibility (EMC) Directive 2004/108/EC

- EN 55014 – 1 (1999) + A1 (2000) + A2(2003): Electromagnetic compatibility. Requirements for household appliances, electrical tools and similar apparatus. Emission.
- EN 55014 – 2 (1998) + A1 (2002): Electromagnetic compatibility. Requirements for household appliances, electrical tools and similar apparatus. Immunity.

Order no	Description
56-47455-01	AquaH Marine Water Heater 1200W / 22L 220V
56-47455-02	AquaH Marine Water Heater 1200W / 22L 120V
56-47455-03	AquaH Marine Water Heater 500W / 22L 220V
56-47455-04	AquaH Marine Water Heater 500W / 22L 120V
56-47456-01	AquaH Marine Water Heater 1200W / 30L 220V
56-47456-02	AquaH Marine Water Heater 1200W / 30L 120V
56-47456-03	AquaH Marine Water Heater 500W / 30L 220V
56-47456-04	AquaH Marine Water Heater 500W / 30L 120V
56-47457-01	AquaH Marine Water Heater 1200W / 45L 220V
56-47457-02	AquaH Marine Water Heater 1200W / 45L 120V
56-47457-03	AquaH Marine Water Heater 500W / 45L 220V
56-47457-04	AquaH Marine Water Heater 500W / 45L 120V
56-47458-01	AquaH Marine Water Heater 1200W / 60L 220V
56-47458-02	AquaH Marine Water Heater 1200W / 60L 120V
56-47458-03	AquaH Marine Water Heater 500W / 60L 220V
56-47458-04	AquaH Marine Water Heater 500W / 60L 120V
56-47459-01	AquaH Marine Water Heater 1200W / 80L 220V
56-47459-02	AquaH Marine Water Heater 1200W / 80L 120V
56-47459-03	AquaH Marine Water Heater 500W / 80L 220V
56-47459-04	AquaH Marine Water Heater 500W / 80L 120V



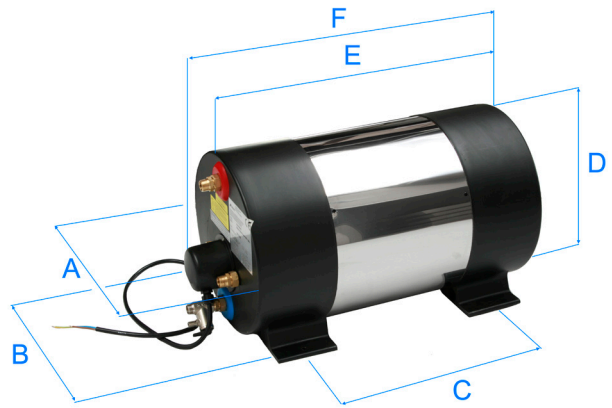
Technical Data

Dimensions

Order no	Electrical supply	Storage capacity	Weight empty	A	B	C	D	E	F
	w	lt (gallons)	kg (lbs)	mm	mm	mm	mm	mm	mm
56-47455-01 / 02	1200	22	10	322	290	235	325	410	485
56-47455-03 / 04	500	(5.81)	(22)	12.7"	11.4"	9.25"	12.8"	16.1"	19.1"
56-47456-01 / 02	1200	30	11,5	322	290	370	325	545	620
56-47456-03 / 04	500	(7.93)	(25.4)	12.7"	11.4"	14.6"	12.8"	21.5"	24.4"
56-47457-01 / 02	1200	45	15	322	290	625	325	805	880
56-47457-03 / 04	500	(11.9)	(33.1)	12.7"	11.4"	24.6"	12.8"	31.7"	34.6"
56-47458-01 / 02	1200	60	17,3	322	290	810	325	990	1065
56-47458-03 / 04	500	(15.9)	(38.1)	12.7"	11.4"	31.9"	12.8"	39"	41.9"
56-47459-01 / 02	1200	80	20	322	290	1030	325	1210	1285
56-47459-03 / 04	500	(21.1)	(44.1)	12.7"	11.4"	40.6"	12.8"	47.6"	50.6"

Electric supply 220-240 V ~ 50 Hz

Water connections 1/2"



Heating time in minutes

1200W

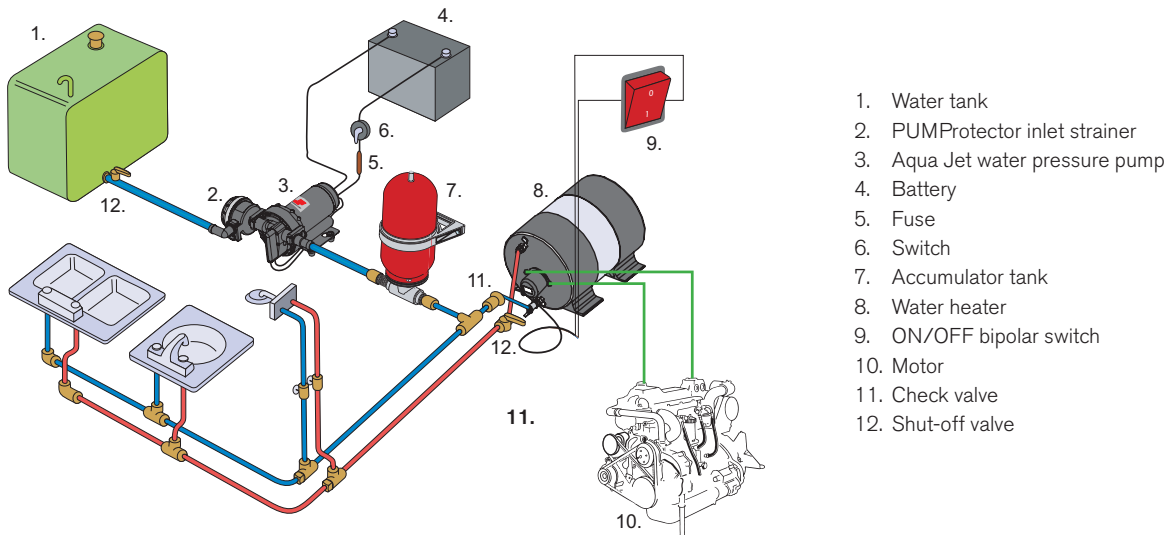
Order no	Electrical supply	Storage capacity	Water temperature in °C (°F)							
			20 (68)	25 (77)	30 (86)	35 (95)	40 (104)	45 (113)	50 (122)	55 (131)
56-47455-01 / 02	1200	22 (5.81)	6	12	19	25	31	38	44	51
56-47456-01 / 02	1200	30 (7.93)	8	17	26	34	43	52	61	69
56-47457-01 / 02	1200	45 (11.9)	13	26	39	52	65	78	91	104
56-47458-01 / 02	1200	60 (15.9)	17	34	52	69	87	104	122	139
56-47459-01 / 02	1200	80 (21.1)	23	46	69	93	116	139	162	186

Initial temperature 15°C (59°F)

500W

Order no	Electrical supply	Storage capacity	Water temperature in °C (°F)							
			20 (68)	25 (77)	30 (86)	35 (95)	40 (104)	45 (113)	50 (122)	55 (131)
56-47455-03 / 04	500	22 (5.81)	15	30	46	61	76	92	107	122
56-47456-03 / 04	500	30 (7.93)	20	41	62	83	104	125	146	167
56-47457-03 / 04	500	45 (11.9)	31	62	94	125	156	188	219	251
56-47458-03 / 04	500	60 (15.9)	41	83	125	167	209	251	293	334
56-47459-03 / 04	500	80 (21.1)	55	111	167	223	279	334	390	446

Initial temperature 15°C (59°F)



1. Water tank
2. PUMProtector inlet strainer
3. Aqua Jet water pressure pump
4. Battery
5. Fuse
6. Switch
7. Accumulator tank
8. Water heater
9. ON/OFF bipolar switch
10. Motor
11. Check valve
12. Shut-off valve

SPX Flow Technology, Box 1436, Nastagatan 19, SE-701 14 Örebro, SWEDEN
E-mail: johnson-pump.marine@processequipment.spx.com

SPX Flow Technology, 1625 Hunter Road, Suite B, Hanover Park, Illinois, 60133, USA
johnson-pump.usa@processequipment.spx.com

www.johnson-pump.com, www.spxft.com

For more information about our worldwide locations, approvals, certifications, and local representatives, please visit www.johnson-pump.com.

SPX Corporation reserves the right to incorporate our latest design and material changes without notice or obligation. Design features, materials of construction and dimensional data, as described in this bulletin, are provided for your information only and should not be relied upon unless confirmed in writing.

Issued: 06/2010 JP-912 GB

Copyright © 2009, 2010 SPX Corporation

SPX
WHERE IDEAS MEET INDUSTRY